



LUNESDALE FOLD



The Bingham

The Bingham is a striking home that blends contemporary luxury with traditional Lune Valley charm. Its impressive double-gabled frontage and sweeping porch canopy create a stunning first impression. Inside, the showstopping vaulted kitchen features exposed beams and two sets of bi-fold doors opening onto the rear patio, ideal for modern family living and entertaining.

The ground floor also includes a spacious sitting room, ample storage, and a grand entrance hall with galleried landing. A standout feature is the luxurious ground-floor Master Suite, complete with walk-in dressing room and spa-style en-suite.

Upstairs, three generous double bedrooms each enjoy a private en-suite, with Bedroom 2 also featuring a walk-in dressing room and Juliet balcony.

A beautifully designed home offering exceptional space, style, and comfort.



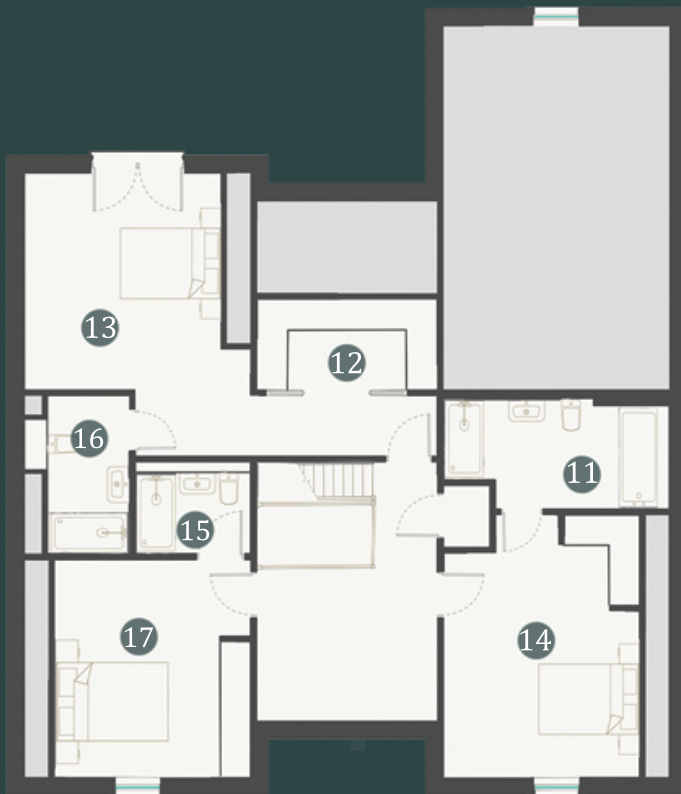
The Bingham

4 BEDROOM DETACHED - 257.85 SQ M / 2776 SQ FT



Ground Floor

1. Kitchen	7.3m x 4.5m	23.9ft x 14.7ft
2. Dining	3.8m x 3.7m	12.4ft x 12.1ft
3. Family	4.5m x 4.3m	14.7ft x 14.1ft
4. Utility	3.0m x 2.4m	9.8ft x 7.8ft
5. Pantry	1.3m x 2.4m	4.2ft x 7.8ft
6. W.C	1.8m x 1.1m	5.9ft x 3.6ft
7. En Suite	4.5m x 1.8m	14.7ft x 5.9ft
8. Sitting Room	4.5m x 5.1m	14.7ft x 16.7ft
9. Walk in Wardrobe	4.5m x 1.8m	14.7ft x 5.9ft
10. Bedroom 1	4.5m x 3.7m	14.7ft x 12.1ft



First Floor

11. En suite	4.5m x 2.2m	14.7ft x 7.2ft
12. Walk in Wardrobe	3.6m x 1.8m	11.8ft x 5.9ft
13. Bedroom 2	4.3m x 3.9m	14.1ft x 12.7ft
14. Bedroom 3	3.8m x 5.2m	12.4ft x 17.1ft
15. En Suite	2.3m x 1.9m	7.5ft x 6.2ft
16. En Suite	2.1m x 1.7m	6.8ft x 5.5ft
17. Bedroom 4	3.9m x 4.4m	12.7ft x 14.4ft



LUNESDALE
FOLD



PRINGLE
HOMES